

SWISS PHARMA MEETING 2011

Sat, 12th November Zürich



School vs. Alternative
Medicine Medicine

It's your choice!



Table of contents

Chairman’s Welcome Word.....2

Federal Councillor Didier Burkhalter’s Message.....3

Rector ETHZ Prof. Heidi Wunderli-Allenspach’s Message.....3

Program.....4

MEET PHARMA5

 - Speakers.....5

MEET ZURICH.....11

 - Zurich City Games.....11

 - Map of Zurich.....11

MEET FRIENDS.....12

 - Dinner.....12

 - Party.....12

asep.....14

Organising Committee.....15

Useful adresses and phone numbers.....17

Can’t get enough?.....18





Chairman's Welcome Word

Dear Swiss Pharmacy Students,
Dear Symposium Guests

I am glad to welcome you to the Swiss Pharmameeting 2011.

There are more than 1250 Pharmacy Students in Switzerland. All spread over 7 universities. All being educated to become the future pharmacists or future developer of new drugs in a world that gets more and more connected. In a world where data and information exchange, fusion of pharmacies and pharmaceutical companies, but also social networks continuously gain importance. It has become a very essence of modern day work to meet with other experts in the own field to assure its productivity. In my opinion this professional exchange can only work if sociocultural barriers are overwound and your partners are also your friends.

The Swiss Pharmameeting 2011 aims exactly at the above mentioned.

Share professional experiences - MEET PHARMA!
Share social experiences - MEET FRIENDS!
Share cultural experiences - MEET ZURICH!

At this year's Swiss Pharmameeting 2011 you will MEET PHARMA in the Auditorium Maximum of ETH Zurich at the public Symposium on the hot topic "School Medicine vs. Alternative Medicine". A dozen of experts will discuss and give you insight into this controversial field. All Pharmacy Students will then MEET ZURICH during the Zurich City Games. If by then, you have not MET any FRIENDS yet, the evening will give you enough opportunities. Get connected during the rich Dinner and unforgettable Party, which expect you.

I hope we can fulfill your expectations to the best and wish you a nice Swiss Pharmameeting.

Meet Pharma, Meet Friends, Meet Zurich!

Yours,



Yoran Beldengrün
Chairman Swiss Pharmameeting 2011



Federal Councillor Didier Burkhalter's Message

Dear organizing committee,
Dear pharmaceutical students and symposium guests,

The chosen topic of your symposium - school medicine versus alternative medicine - has been and is an issue much discussed. It obviously concerns many people, personally or scientifically, be they patients, health politicians, pharmacists or other health professionals. As basic courses on complementary medicine will be integrated in the course of studies of all future pharmacists it will even gain in importance for you as professionals.

Discussions of the topic tend to stress fundamental differences and antagonisms, between school medicine and alternative medicine, between science and belief or technology and nature. As Federal Minister of Health I am convinced that the choice we need to make is not between school medicine and complementary medicine. The crucial questions are rather: how to integrate the two? How to reconcile school medicine and alternative medical approaches so they can complement each other?

The constitutional article on complementary medicine stipulates that the Swiss Confederation and cantons, each according to its jurisdiction, take complementary medicine into account. It thus forces us to take these questions seriously. First steps have been taken to put this constitutional obligation into effect, for example the decisions to integrate complementary medicine into the course of studies of all medical and pharmaceutical professionals and to re-evaluate 5 complementary medical approaches.

Open minds, scientific rigor and the readiness to question personal beliefs will help us find sensible ways to integrate complementary and school medicine. I wish you all an enriching day of scientific and personal exchange at the Swiss Pharmameeting 2011.



Federal Councillor Didier Burkhalter
Federal Department of Home Affairs FDHA

Rector ETHZ Prof. Heidi Wunderli-Allenspach's Message

Welcome to the ETH, Welcome to Zürich!

It's an excellent idea to bring together all pharmacy students from Switzerland, to deal in a special environment with their subject and meet their fellow students and future professional colleagues.

Furthermore I appreciate the choice of the controversial topic for this year's Swiss Pharmameeting: "School Medicine vs. Alternative Medicine - it's your Choice! ". It seems to me particularly well suited to discuss about the essentials of Pharmaceutical Sciences and on the scientific approach to gain clarity about one's personal view. It is important to you, as future medical professionals, to face this issue.

I wish all participants unbiased, critical and constructive discussions!



Heidi Wunderli-Allenspach,
Rector ETH Zürich





Program Swiss Pharmameeting 2011

Saturday, 12th November 2011



**PUBLIC SYMPOSIUM
FOR EVERYONE**

10:30	Welcome Speeches
10:45	Presentation of ETH Zurich - <i>Prof. Karl-Heinz Altmann</i>
11:00	Clinical Approaches (Presentations) SCHOOL MEDICAL HEADACHE TREATMENTS - <i>Dr. Reto Agosti</i> HEADACHE TREATMENTS IN ALTERNATIVE MEDICINE - <i>Dr. Simon Feldhaus</i>
12:15	Lunch
13:15	Scientific Backgrounds (Discussion Round) LIMITS & COMPATIBILITY OF SCHOOL - AND ALTERNATIVE MEDICINE - <i>Dr. Hansueli Albonico</i> - <i>Prof. Jürgen Drewe</i> - <i>Prof. Dr. Christoph Meier</i> - <i>Prof. P. August Schubiger</i> - <i>Dr. Sven Seitz</i> - <i>Prof. Johann Steurer</i>
14:30	Apéro
14:45	Political Implementations (Debate) ACTUAL SITUATION OF SCHOOL- AND ALTERNATIVE MEDICINE IN SWITZERLAND - <i>Dr. Hansueli Albonico</i> - <i>lic. iur. Rolf Dietschi</i> - <i>Dr. Mónica Mennet-von Eiff</i> - <i>Prof. Dr. Christoph Meier</i>
16:00	Apéro-Riche

**PHARMACY
STUDENTS ONLY**

17:00	Zurich City Games/ Guided Citytour
19:30	Dinner at Zurich Marriott *****Hotel
22:00	Party at ZicZac Dörfli



MEET PHARMA

“School Medicine vs. Alternative Medicine – It’s Your Choice”

The whole Symposium takes place in Auditorium Maximum, ETH Zurich

Speakers

ETH Presentation



Prof. Karl-Heinz Altmann

Director of Studies, Pharmaceutical Sciences ETH Zurich

Prof. Karl-Heinz Altmann has been Professor of Pharmaceutical Biology at the Institute of Pharmaceutical Sciences at the ETH Zürich since 2003. Since 2007 he is also the Director of Studies for the Bachelor and Master programs in Pharmaceutical Sciences.

1990 he joined Ciba-Geigy’s Central Research Laboratories in Basel after his studies in Switzerland and the USA.

2000-2002 he was the Novartis Pharma Research Senior Chemistry Expert and from Jan. - July 2003 he was the acting Global Head of Chemistry of the Novartis Institutes for BioMedical Research.

Headache Treatments

Headache treatment with School Medicine



Dr. Reto Agosti

M.D., Director and Founder Headache Center Hirslanden, Zürich.

Dr. Agosti graduated from University of Zurich in Medicine, followed by 3 year in Neurology at University Hospital Zurich and 8 years in New York and Boston including fellowships in Headache, Neurorehab and Behavioral Neurology. 1999 back to Zurich University Hospital as head of the Headache Unit and since 2002 in private practice focusing on headaches in collaboration with Klinik Hirslanden.

Headache treatment with Alternative Medicine



Dr. Simon Feldhaus

Head Physician of the Paramed Ambulatorium in Baar

Dr. Simon Feldhaus took his Medical Studies at the University of Saarland and is now a graduated general practitioner with further graduation as a natural health professional and TCM-Therapist in Switzerland. Besides working as a doctor and therapist, he is giving lectures in acupuncture, orthomolecular medicine, natural medicine and elastic taping. Furthermore Dr. Feldhaus is author of different publications and has been speaker at national and international conferences.



Scientific-Based Discussion Round



Prof. Johann Steurer

Director of the Horten Centre at the University of Zurich

After medical school training Prof. Steurer started to work in Internal Medicine and Angiology at the University Hospital in Zurich. Since 2000 he is the director of the Horten Centre for patient oriented research and knowledge transfer at the University of Zurich. His main interest is the field of diagnostic research and the generation of knowledge in medicine.



Dr. Hansueli Albonico

Head of the Department of Complementary Medicine, Regional Hospital Emmental

President of the Union of Associations of Swiss Physicians for Complementary Medicine

After an internship Dr. Albonico worked as Medical Coordinator of ICRC in Thailand and with Solidarmed in Zimbabwe. He founded a group of practice of complementary family medicine in Langnau and the Department of Complementary Medicine at the Regional Hospital Emmental. As an expert he is furthermore strongly involved in the political treatment of the topic of Complementary Medicine.



Dr. Sven Seitz

Senior Manager Health Care Policy & Market Access at Pfizer AG, Switzerland.

Sven Seitz has an MSc from the University of Zurich and a PhD from ETH Zurich. After his thesis on drug side-effects he joined the pharmaceutical industry, where he held different sales and marketing positions for almost 10 years. 2008 he changed his professional focus to Market Access and Health Care Policy with Pfizer. At the same time Sven Seitz started studies in Public Health which he will conclude 2011 with a Master's degree.



Prof. P. August Schubiger

Professor em. for Radiopharmacy ETH,

Fellow Collegium Helveticum

P. August Schubiger was Professor for Radiopharmacy at the Institute of Pharmaceutical Sciences at ETH Zürich from 1997 to July 2010. He led the Radiopharmacy Center at ETH, at the Paul-Scherrer-Institute and at the Clinic and Policlinic for nuclear medicine of the university hospital of Zürich.

He focussed his research on functional radiopharmaceuticals which were used for nuclear medicinal diagnosis (PET and SPET) and also for targeted cancer therapy of tumor-metastases.

In 2009 he was elected as Fellow at the Collegium Helveticum, a transdisciplinary laboratory of the university and ETH Zürich where he does some research on the value of animal experiments on the prediction of efficacy of new drugs in the human body.



Prof. Jürgen Drewe

Director of Preclinical Research, Max Zeller Söhne AG

Prof. Jürgen Drewe made studies of mathematics (M.Sc.) and medicine (M.D.) at the Free University of Berlin, D. (Inst. for Molecular Biology and Biochemistry). He is a certified specialist (FMH) in Clinical Pharmacology & Toxicology and Pharmaceutical Medicine (CH) and Clinical Pharmacology (D). He worked as Professor for Clinical Pharmacology at the University of Basel and was lecturer at the University of Basel and ETHZ. Since 2009 Prof. Drewe is Director of Preclinical Research at Max Zeller Söhne AG, Romanshorn.



Prof. Dr. Christoph Meier

**Chief pharmacist of the Hospital Pharmacy at the University Hospital Basel
Professor for Clinical Pharmacy and Epidemiology at the University of Basel.**

Christoph Meier has degrees in pharmacy (Basel) and epidemiology (Boston). His research focus is pharmacoepidemiology and drug safety in the postmarketing phase IV. He is the chief pharmacist of the Hospital Pharmacy at the University Hospital Basel and Professor for Clinical Pharmacy and Epidemiology at the Department of Pharmaceutical Sciences at the University of Basel.

Political Debate



Dr. Mónica Mennet-von Eiff
Head Weleda Drug Regulatory Affairs

In 1994, after Mrs. Mennet's pharmacy study at the University in Basel and her PhD, she became Head of Production at Weleda AG, Switzerland. She was in charge of the production of all non sterile dosage forms, Phytomedicine, Homeopathy and Anthroposophic medicinal products. Since 2009 she is Member of the Management Board Weleda Ltd. Switzerland. In 2011 she took over the responsibility as Head of Weleda Drug Regulatory Affairs for the Weleda group. Mrs. Mennet represents the complementary medicine in several committees and towards the Swiss health authority.



lic. iur. Rolf Dietschi
Director of "Allianz Schweizer Krankenversicherer"

Reto Dietschi is lawyer and worked for 12 years at Helsana in several leading positions. From 2006-2011, he worked as consultant for several health insurance companies and companies from the pharmaceutical as well as biomedical engineering industry. He is the current leader of the new association "Alliance Swiss Health insurances" which has been founded by Helsana, Groupe Mutuel and Sanitas this summer.



Dr. Hansueli Albonico
Head of the Department of Complementary Medicine, Regional Hospital Emmental
President of the Union of Associations of Swiss Physicians for Complementary Medicine

After an internship Dr. Albonico worked as Medical Coordinator of ICRC in Thailand and with Solidarmed in Zimbabwe. He founded a group of practice of complementary family medicine in Langnau and the Department of Complementary Medicine at the Regional Hospital Emmental. As an expert he is furthermore strongly involved in the political treatment of the topic of Complementary Medicine.



Prof. Dr. Christoph Meier
Chief pharmacist of the Hospital Pharmacy at the University Hospital Basel
Professor for Clinical Pharmacy and Epidemiology at the University of Basel.

Christoph Meier has degrees in pharmacy (Basel) and epidemiology (Boston). His research focus is pharmacoepidemiology and drug safety in the postmarketing phase IV. He is the chief pharmacist of the Hospital Pharmacy at the University Hospital Basel and Professor for Clinical Pharmacy and Epidemiology at the Department of Pharmaceutical Sciences at the University of Basel.



Marketingaspekte zur Komplementärmedizin

Ansatz der Pill Apotheken

Realistische Zielgruppenmodelle

Wer will überhaupt Komplementärmedizin? Diese Frage stellten sich die Pill Apotheken und suchten eine passende Methode für die Beantwortung. Um die Vielfalt und Individualität der Konsumenten zu beschreiben, braucht es mehr als die punktuelle Betrachtung von soziodemografischen Daten wie Alter, Schulbildung oder Kaufkraft. Diese allein führen allzu häufig zu Fehlschlüssen und damit zu Fehlinvestitionen im Marketing. Am geeignetsten stellte sich so ein Schema heraus, welches vom Institut Sinus Geo Milieus® erhoben wird: Personen werden nach sozialem Stand einerseits und nach traditioneller Einstellung andererseits aufgeteilt. Die Menschen innerhalb einer Gruppe haben gleiche Werte und pflegen einen ähnlichen Lebensstil.

Lebensweltsegmente in der Medizin

Für Traditionalisten ist Medizin ein Mittel der Reparatur, quasi „Reparationsmedizin“. Die Autorität des Arztes wird weitgehend nicht hinterfragt. Bei eher progressiv eingestellten Personen

kommt ein Aspekt der Angst dazu: Prävention ist gefragt, welche auch die Komplementärmedizin bezieht. Die Unterschicht wiederum achtet die Gesundheit wenig, Risiken werden verdrängt die Medizin verkommt zur „Notfall- und Rettungsmedizin“. Es sind die eher leicht progressiv, modern eingestellten Menschen der Mittel- und Oberschicht, welche die Komplementärmedizin am stärksten bevorzugen. Sie pflegen einen ganzheitlichen, präventiven Lebensstil und achten auf die Umwelt. Und: in allen Gruppen sind zudem die Frauen der Komplementärmedizin stärker zugeneigt als die Männer. Natürlich ist diese Darstellung sehr vereinfacht.

Schul- und Komplementärmedizin im Gleichgewicht

Die Pill Apotheken möchten die Gruppe der „eher progressiven“ Mittelschicht ansprechen und gewinnen, denn sie teilen auch deren Werte: Gesundheit & Wohlbefinden, nachhaltigen Umgang mit Ressourcen, sinnvolles Leben und Hochhalten der



Foto: Pill Apotheke Fröhlichstrasse: Tradition & Moderne vereint

Qualität. Die Pill Apotheken möchten das Gute aus der Schulmedizin und der Naturheilkunde vereinen, und so die Lebensqualität der Kunden erhöhen und Ihnen die Möglichkeit einer Auswahl geben – ohne die beiden Richtungen gegeneinander auszuspielen.

Zielgruppenmarketing mit Wissen und Stil

Mit einer kleinen Gruppe der Zielkundschaft wurde an einem Workshop getestet, welche Bedürfnisse, welchen Auftritt und welche Werbung gewünscht wird. Marketing ist ein Versprechen. Der Aufwand lohnt sich nur, wenn das Versprechen auch eingelöst wird. Die Zielgruppe ist nicht nur bezüglich der Ästhetik anspruchsvoll. Sie hat den höchsten Anspruch der verschiedenen Gruppen nach umfassender und individueller Information.

Nicht zuletzt darum investieren die Pill Apotheken in die Aus- und Weiterbildung der Mitarbeiter und setzen den Fokus dabei auf die Komplementärmedizin.

Und zumindest für die Pill Apotheken ist der Weg richtig: Apotheken, welche von einer Apothekerin geführt werden, welche die Komplementärmedizin konsequent umsetzt und dem Kunden dadurch einen Mehrwert zur Schulmedizin gibt, sind erfolgreicher.

Weitere Infos zu den Pill Apotheken wie auch Stellenangebote unter

www.pill.ch

Redaktion: Johannes Barandun, Inhaber Pill Group
jbarandun@pill.ch



MEET FRIENDS

Dinner

Dinner will take place in one of the excellent and exclusive restaurant in Zurich, at the Zurich Marriott *****Hotel!



It will be accompanied by the “Dinner Farewell Lecture” on a special section of Alternative Medicine.

Dinner Farewell Lecture



Hugo Stamm
Journalist, Esoteric- and Sect Expert

Hugo Stamm (62) is a journalist und works since 35 years for the newspaper „Tages-Anzeiger“ in Zürich. He is specialist about sects, cults and esoteric. Stamm has written many books about this subject. He will talk about the way sects and shamans try to heal patients, also a kind of extreme alternative medicine.

Party at ZIC ZAC Dörfli – free entry, cheaper drinks – it’s great to be a pharmacy student!



- Beer: 5.50 CHF
- Vodka Lemon: 13.50 CHF
- Vodka Tonic: 13.50 CHF
- Cuba Libre: 13.00 CHF



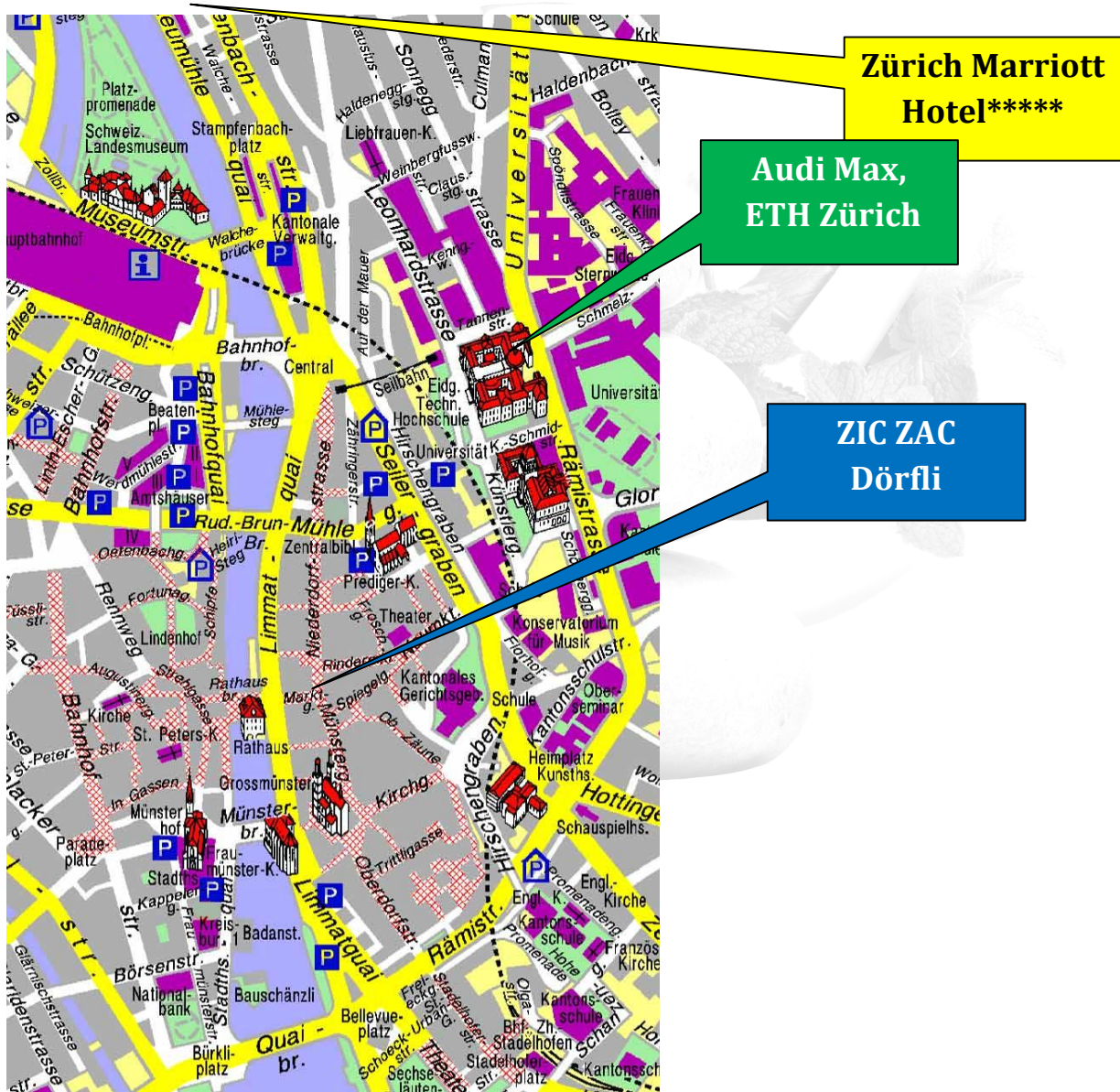
MEET ZURICH

Zurich City Games

Be ready to visit Zurich in a way you have never done it before!
Please meet at the **back** entrance (towards Polyterasse) of the ETH Hauptgebäude in time according to your group.

Alternative: Zurich City Tour

Please meet at 5 pm at the **front** main entrance of ETH Hauptgebäude.



SIE INTERESSIEREN SICH FÜR DIE OFFIZIN?



«Herzlich Willkommen – bei uns sind Sie richtig!
Wir begleiten Sie auf Ihrem Weg zur passionierten
Apothekerin*».

Einblick mit Ausblick

_Die **Famulatur** in einer unserer Apotheken gewährt Ihnen einen ersten Einblick in den Alltag einer Offizin – von den pharmazeutischen Tätigkeiten über die unternehmerischen Aufgaben bis hin zu den Zusammenhängen im Gesundheitswesen.

_Das **Assistenzjahr** ist Kernelement Ihres Studiums. Unser schweizweites Apotheken-Netzwerk bietet Ihnen vielfältige Möglichkeiten in allen Landesteilen – sei es in einer Quartierapotheke, in einer Offizin mit viel Laufkundschaft oder in einer Tourismusregion, wo Ihre guten Sprachkenntnisse besonders gefragt sind.

_Unsere Geschäftsführerinnen bereiten sich mit einer zusätzlichen Ausbildung speziell darauf vor, Sie professionell zu begleiten. Sie vermitteln Ihnen neben Beratungskompetenz und Laborpraxis auch Kenntnisse, die für die Apothekenführung notwendig sind.

_Stehen Sie kurz vor dem Studienabschluss? Bei uns warten **attraktive Stellen** in der ganzen Schweiz auf Sie! Wir freuen uns, wenn Sie sich für die abwechslungsreiche und anspruchsvolle Tätigkeit in einer unserer Apotheken entscheiden.

Ihr Plus bei uns

- _Voll- oder Teilzeitstellen in allen Schweizer Landesteilen
- _Über 120 unterschiedliche Standorte: Apotheken in Quartieren, Einkaufszentren, Städten oder an Verkehrsknotenpunkten
- _Attraktive Arbeitsbedingungen: flexible Arbeitszeitmodelle, grosszügige Ferienregelung, gute Sozialleistungen, Erfolgsbeteiligungen
- _Von der Universität Basel anerkannter Zertifikatskurs in Betriebsführung (CAS)
- _Dynamisches, zukunftsorientiertes Umfeld
- _Einzigartige Entwicklungs- und Karrierechancen
- _Umfassendes berufsbegleitendes Weiterbildungsangebot
- _Erfahrungsaustausch im schweizweiten Apotheken-Netzwerk
- _Unterstützung in Administration und Marketing
- _Hohe Eigenverantwortung und Selbstständigkeit

**Lust darauf, spannende Aufgaben anzupacken?
Dann melden Sie sich bei uns.**

* Wir verwenden generell die weibliche Schreibweise, schliessen aber beide Geschlechter gleichwertig ein.

Amavita Apotheken

Coop Vitality Apotheken

Galenicare Management AG · Human Resources

Untermattweg 8 · Postfach · 3001 Bern

www.amavita.ch · perspektiven@amavita.ch

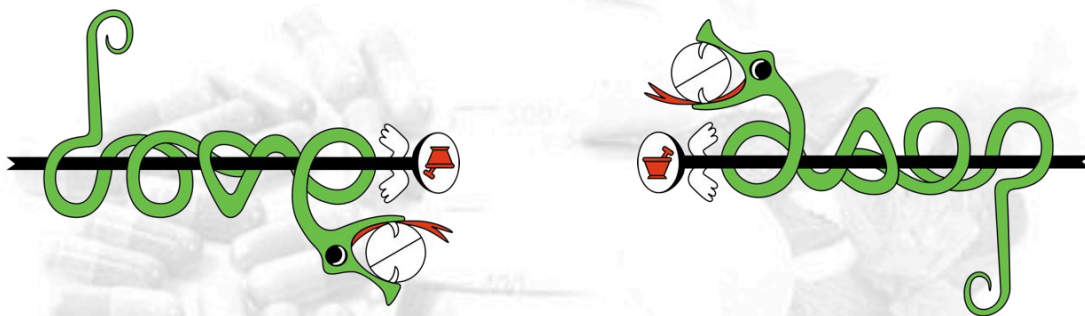
www.coopvitality.ch · perspektiven@coop-vitality.ch

Was ist die aseph (association suisse des étudiants en pharmacie)?

Die Zwecke von unserem Verein sind vielseitig aber klar definiert. Statuarisch hat die aseph zwei eindeutige Aufgaben.

Die Erste betrifft die Repräsentation der Studierenden gegenüber Universitäten, Berufsverbände und Eidgenossenschaft. Bei all diesen Institutionen werden Bestimmungen getroffen, welche uns Studierende direkt anbelangen. Auf diesen Stufen setzt sich die aseph mit grossem Engagement für optimalste Rahmenbedingungen ein. Es ist von allerhöchster Relevanz, dass unsere Stimme in Entscheidungsprozesse gehört und mitberücksichtigt wird.

Da wir auch kein virtueller Verein sind, ist uns die schweizweite Zusammenkunft von Studierenden ebenfalls wichtig. Unser zweites statuarisches Anliegen liegt in der Förderung von Kontakte zwischen den zukünftigen Pharmazeuten in der ganzen Schweiz, in Europa und auf globaler Ebene. Dies hat auch eine enorme Bedeutung, um grenzüberschreitende Themen (z.B. die Bolognastudienordnungen) diskutieren zu können.



Qu'est-ce que l'aseph (association suisse des étudiants en pharmacie)?

Les buts de notre association sont divers, mais clairement définis. Nos statuts nous donnent deux missions précises.

La première étant de représenter les étudiants auprès des universités, des associations professionnelles, et de la confédération. Toutes ces institutions prennent des décisions majeures touchant directement les étudiants. A ces niveaux, l'aseph s'engage pour des conditions des plus optimales. Que notre voix soit entendue et prise au sérieux relève de la plus haute importance.

Comme nous ne sommes pas une association virtuelle, nous mettons également beaucoup de poids à ce qu'il existe des possibilités de rencontre entre les étudiantes et étudiants. Notre deuxième fonction statutaire a pour but la promotion des contacts entre les futurs professionnels de la pharmacie. Ceci au niveau suisse, mais aussi européen ou global. Certains sujets touchent aussi nos voisins, et à ce titre, les discussions réelles disposent d'une priorité élevée. Le processus de Bologne est un exemple de thème abordé.

Organising Committee



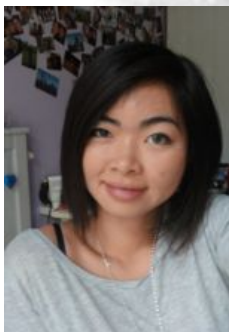
Chairman Swiss Pharmameeting 2011

Name: Yoran Beldengrün
 University: ETH Zurich
 Year of study: 5th semester, Bachelor in Pharmaceutical Sciences
 Function in asef: Swiss EPSA* Liaison Secretary 2012



Social Program Coordinator

Name: Theresa Burkard
 University: ETH Zurich
 Year of study: 9th semester, Master in Pharmaceutical Sciences
 Function in asef: asef president 2012
 Swiss EPSA* Official Delegate 2011
 Swiss EPSA* National Coordinator of Individual Mobility Project (IMP) 2011



Registration Officer Booklet Designer

Name: Hanh Pham
 University: University of Basel
 Year of study: 7th semester, Master in Pharmacy
 Function in asef*: Swiss EPSA* Liaison Secretary 2011
 Official Delegate 2010



Sponsoring Romandie

Name: Lionel Vidoudez
 University : Université Genève
 Year of study : graduated 2010 with the Swiss Federal Diploma in Pharmacy
 Function in asef: KWFB** 2008-2010
 EPSA* Official Delegate 2007-08
 Function in EPSA*: Treasurer 2009
 Audit committee 2008



Sponsoring

Name: Rafael Hartmann

University: ETH Zurich

Year of study: 3rd semester, Bachelor in Pharmaceutical Sciences

Function in ase^p*: Sponsoring 2011 and 2012



Chairman Assistant

Name: Cyrill Brunner

University: ETH Zurich

Year of study: 3rd semester, Bachelor in Pharmaceutical Sciences



Web Designer

Name: Corinne Brühwiler

University: ETH Zurich

Year of study: 9th semester, Master in Pharmaceutical Sciences



Treasurer

Name: Laura Thommen

University: ETH Zurich

Year of study: 5th semester, Bachelor in Pharmaceutical Sciences

Function in APV^{***}: Treasurer since 2010

* EPISA: European Pharmaceutical Student Association

**KWFB: Kommission für Fort- und Weiterbildung

***APV: Akademischer Pharmazeutischer Verein Zürich

Useful addresses and phone numbers

Addresses

ETH Zurich

Hauptgebäude 101
8092 Zürich

Zurich Marriott Hotel

Neumuehlequai 42
8001 Zürich

Zic Zac Dörfli

Marktgasse 17
8001 Zürich

Phone numbers

Chairman Swiss Pharmameeting 2011

Yoran Beldengrün – 0041 79 537 83 06

Social Program Coordinator

Theresa Burkard – 0041 78 715 72 24

Registration Officer

Hanh Pham – 0041 78 792 41 12

Zurich City Games Coordinator

Nicolas Huguenin – 0041 79 520 20 11

Tourguide Coordinator

Rafael Hartmann – 0041 79 960 20 66



Can't get enough? Check this out!

asep is looking for you:

secrétariat francophone:

- pharmacy student from the French-speaking part of Switzerland,
- facilitating communication with French-speaking Pharmacy students in Switzerland
- writing assembly reports in French and making them available to French-speaking Pharmacy students in Switzerland

IPSF LEO

- facilitating SEP (Student Exchange Program) in the French-speaking part of Switzerland
- finding internships and placing International Students to the Internships in Switzerland
- Participation in the annual world congress of IPSF (International Pharmaceutical Student Federation)

International pharmaceutical student congresses in 2012



European Pharmaceutical Students'
Association

www.epsa-online.org



International Pharmaceutical
Students' Federation

www.ipsf.org

Main sponsors



Partners and Sponsors



Viel Zeit für ein gutes Bier.
www.falken.ch

